



**Isolamin**

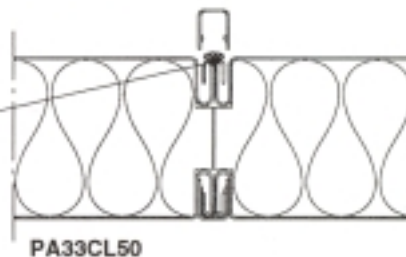
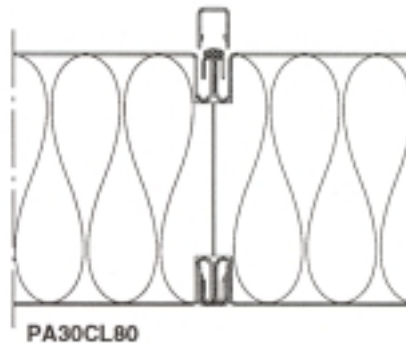
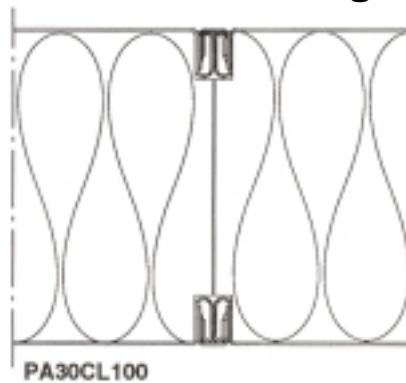
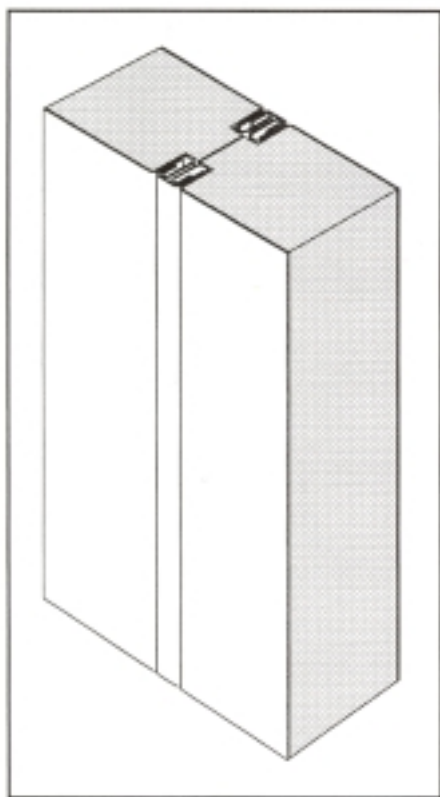
# FAN ROOM

**ISOLAMIN FLEXIBLE  
WALL SYSTEM**



Products	1
Load diagram	2
Floor connection	3
Corner connection	4
Ceiling connection	5

## Fan room wall, fire resistant and sound reducing.



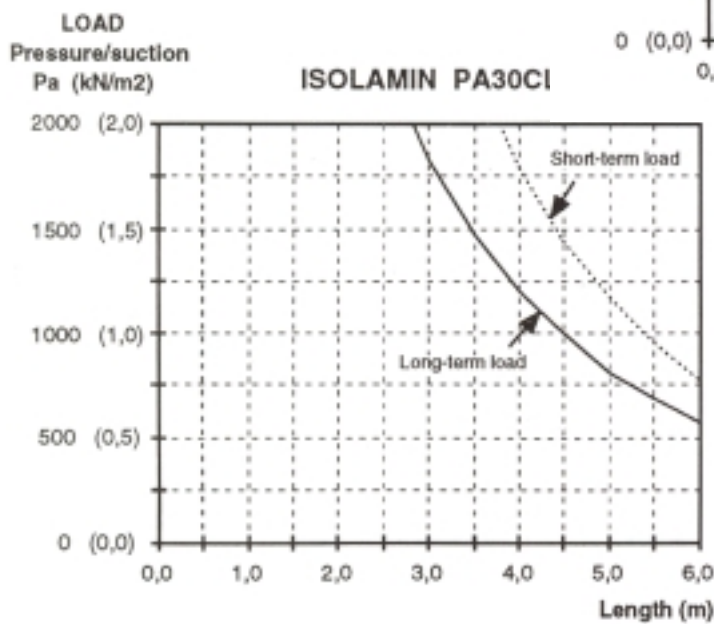
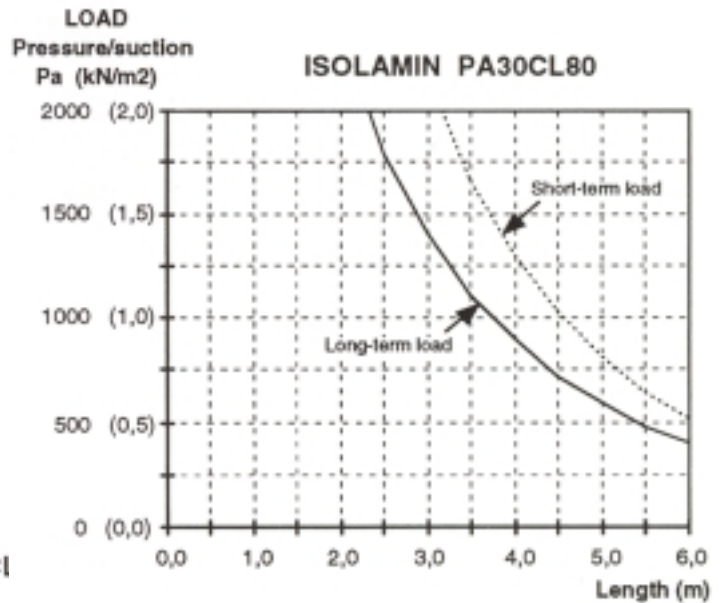
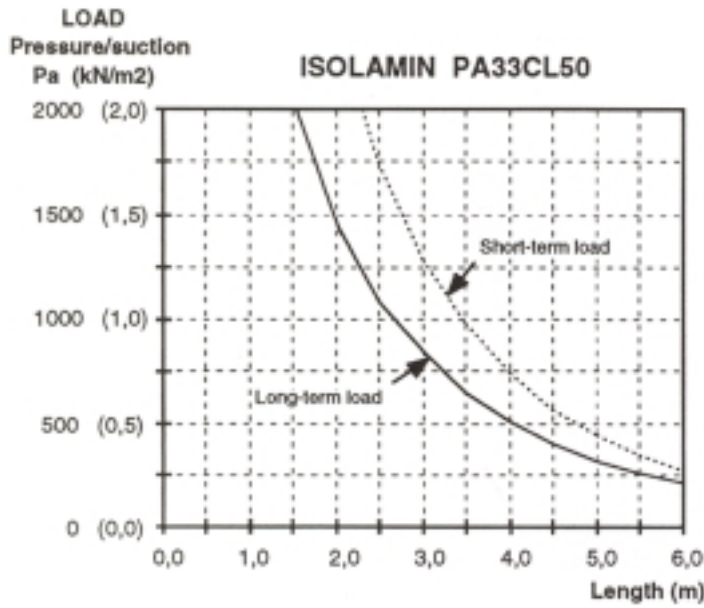
Apply jointing paste during installation.

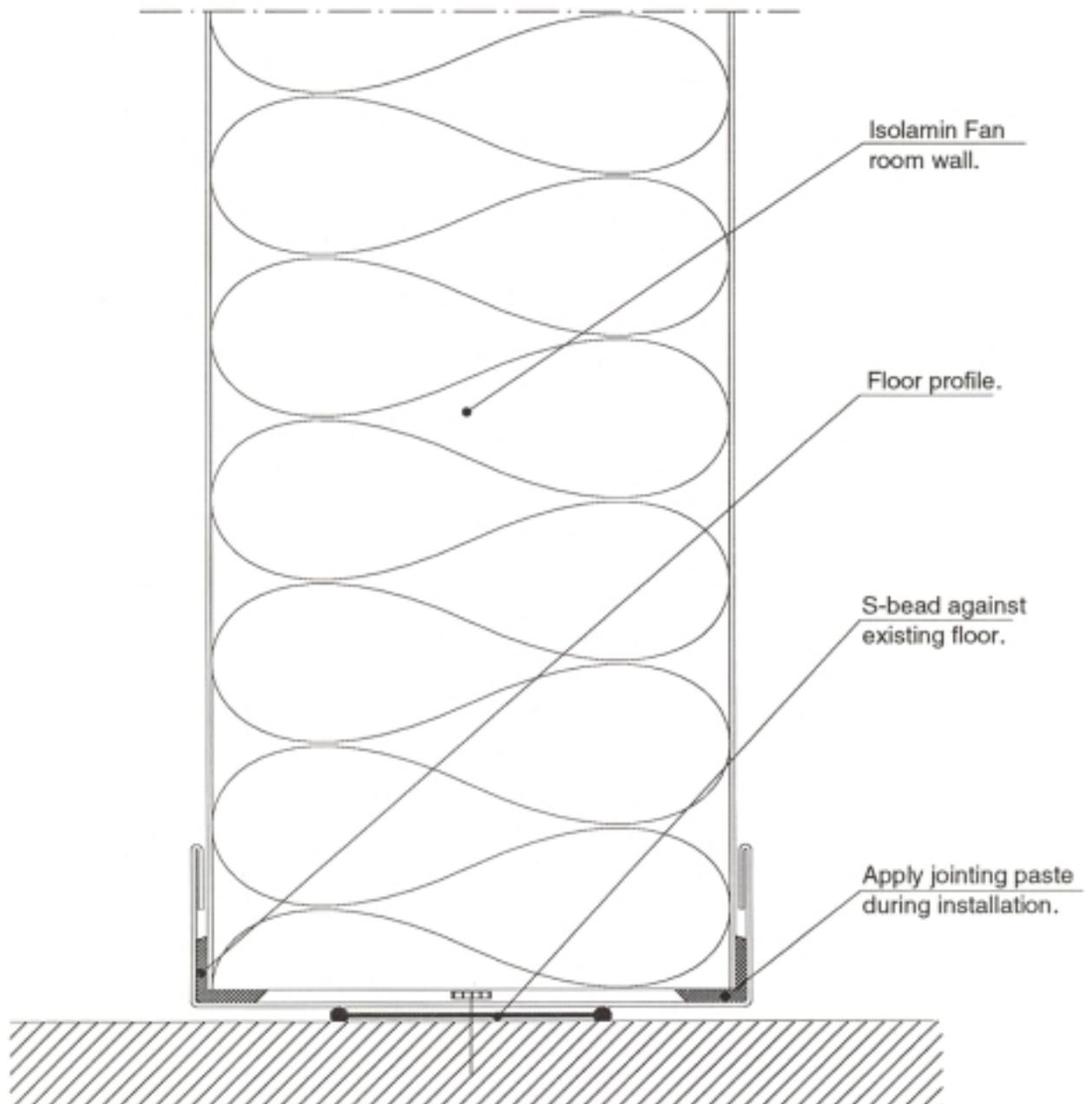
The technical information given in this publication was accurate in time for the publication. We will reserve us for changes which depends on our forth going product development. Latest available technical information regarding products will be given on request.

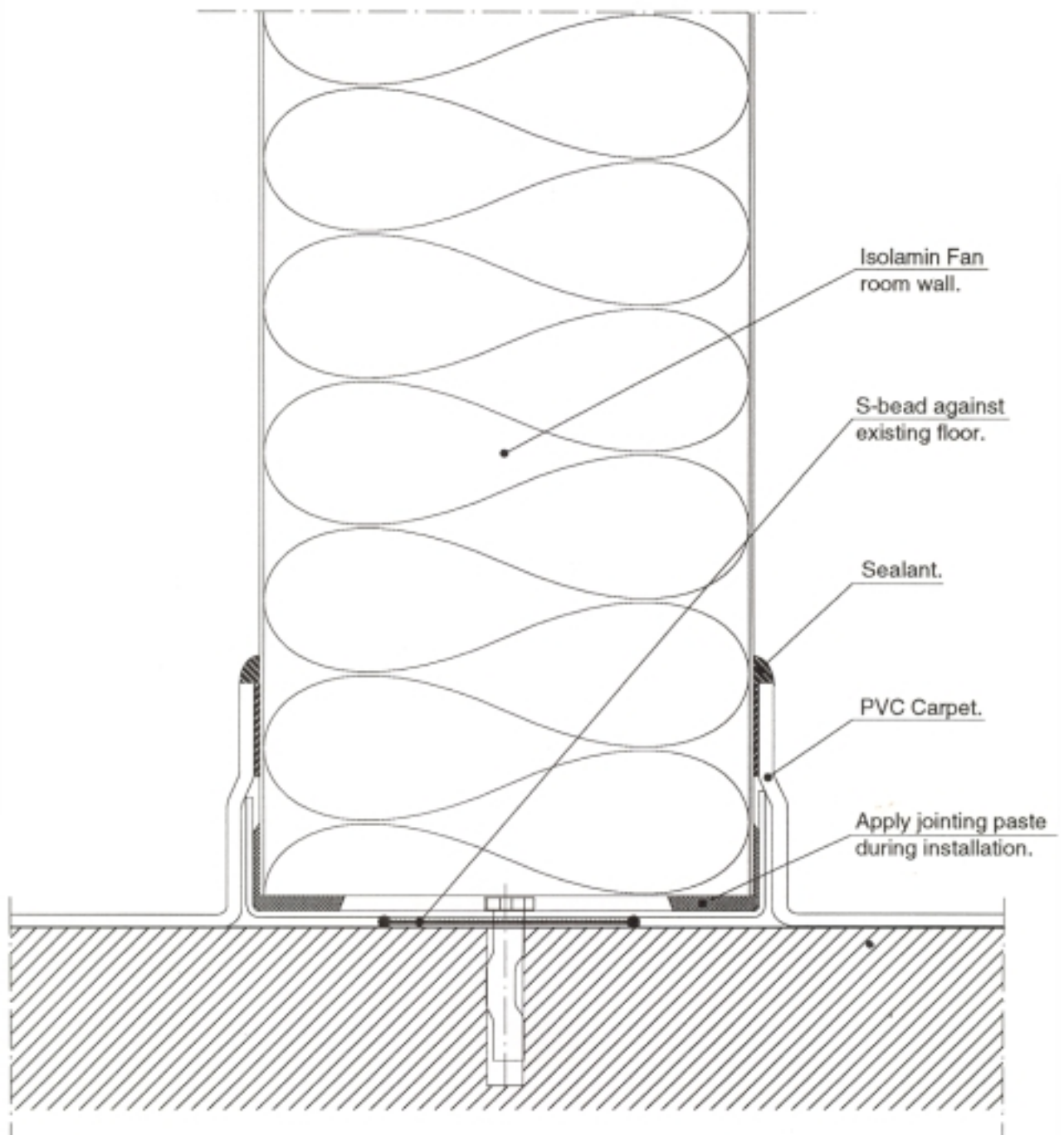
PANEL	PA30CL80	PA30CL100	PA33CL50
Thickness :	80 mm	100 mm	50 mm
Weight :	24,2 kg/sq.m	27,6 kg/sq.m	20,4 kg/sq.m
Surface finish/	Painted / 565, 1180 mm	Painted / 565, 1180 mm	Painted / 565, 1180 mm
Modular width :	PVC, Galv. / 590, 1180 mm	PVC, Galv. / 590, 1180 mm	PVC, Galv. / 590, 1180 mm
Fire class :	A 60 *	A 60 *	A 30 *
Sound reduction :	33 dB la lab	32 dB la lab	34 dB la lab
Coefficient of thermal Conductance :	0,54 W/sq.m C	0,44 W/sq.m C	0,81 W/sq.m C

\* Type approval certificate Nr: 4427/88

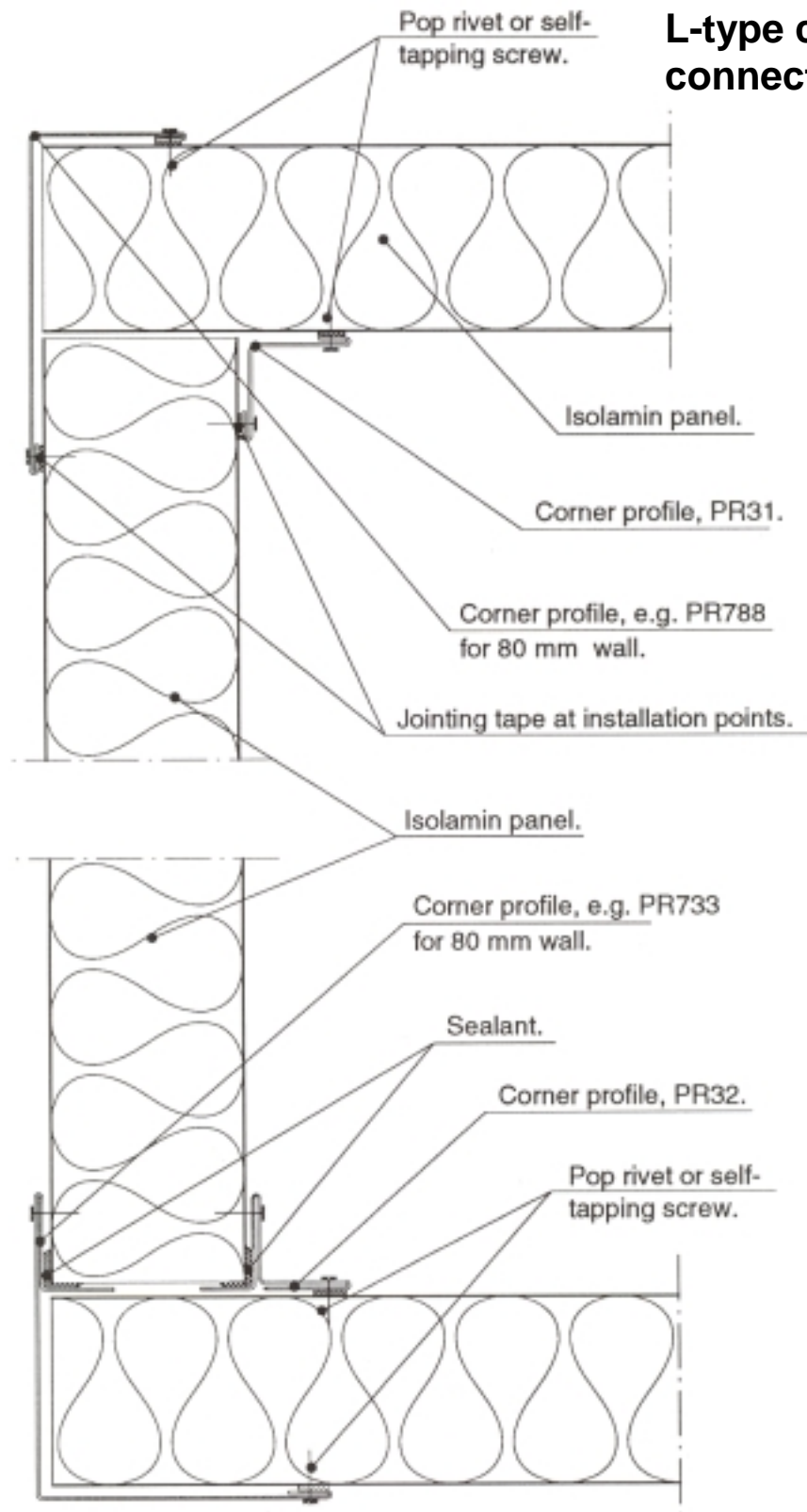
TOLERANCES		CORE MATERIAL		SURFACE MATERIAL	
Length	: ± 5 mm	Material	: Mineral wool	Material	: Hot dipped galvanised steel sheet
Width	: ± 1 mm	Density	: 170 kg/cu.m ± 10 %	Surface finish/:	PVC, Galv. / 0,5 mm
Thickness	: +0/-1 mm			Thickness	Painted / 0.6 mm
					All types / 0.7 mm – PA33CL50

**Pressure/suction load of fan room wall.**


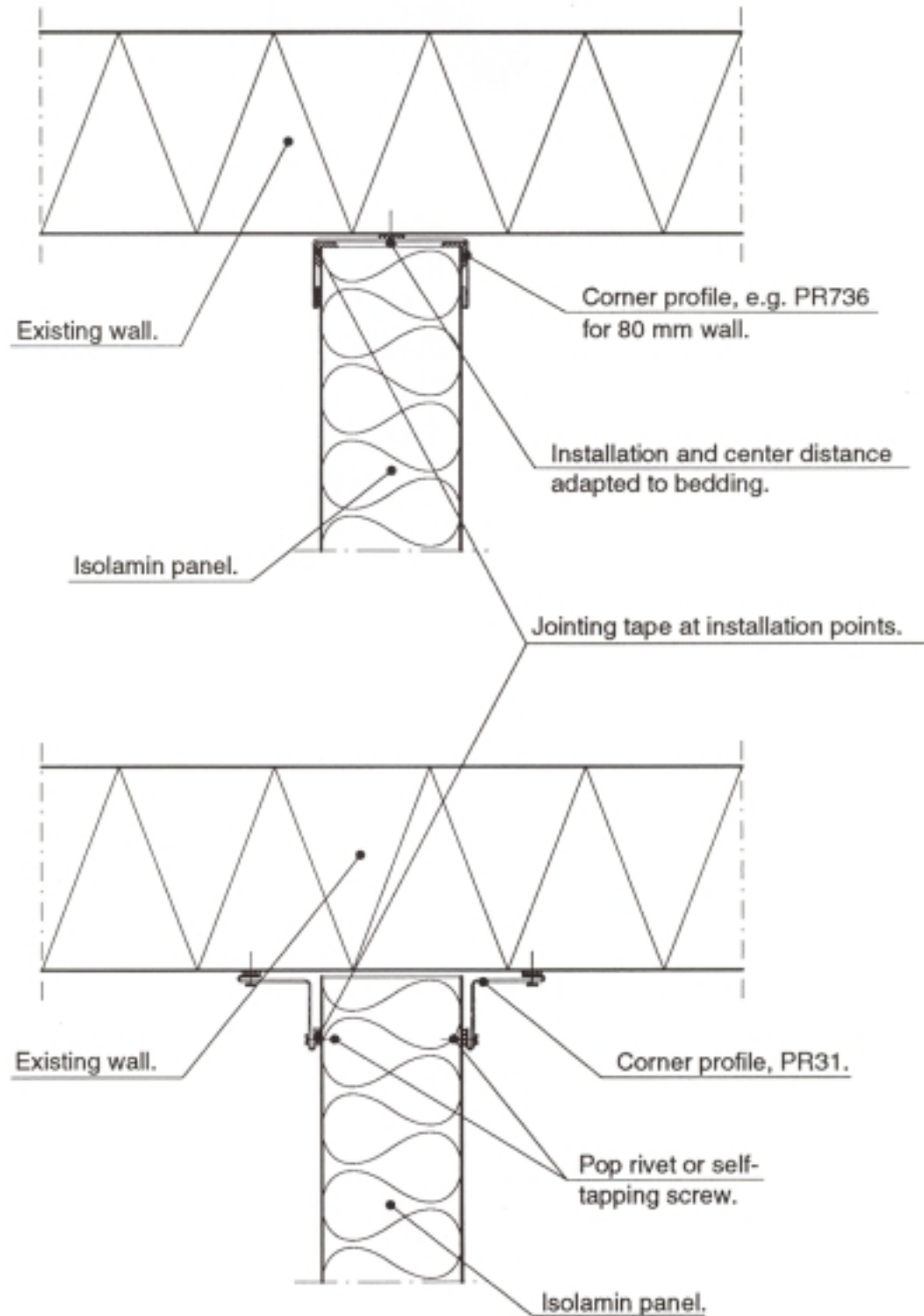
**Floor connection,  
alternative 1.**

**Floor connection,  
alternative 2.**

### L-type corner connection.





**T-type corner connection.**



**Wall-Ceiling connection,  
including various ceiling levels.**