



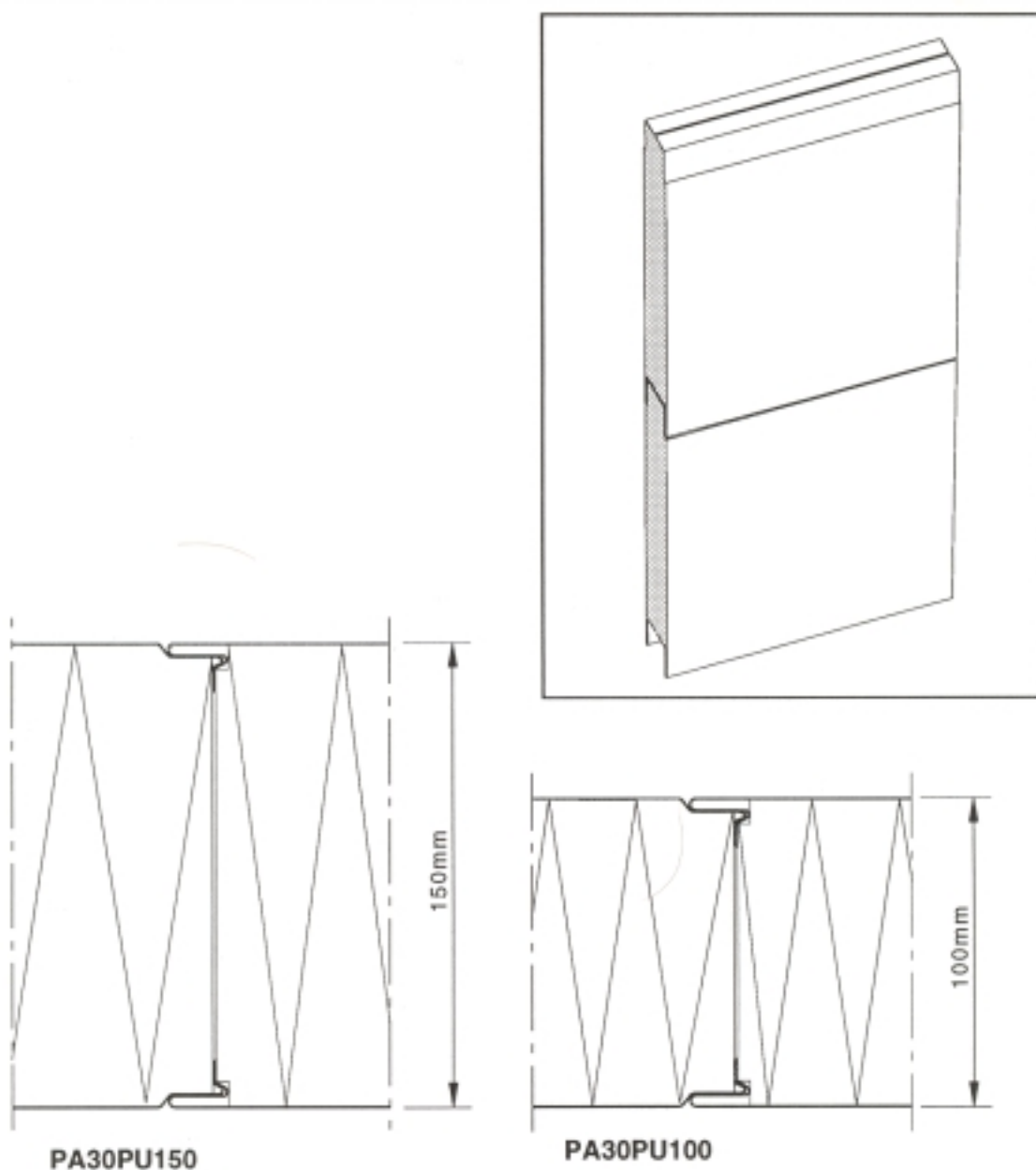
Isolamin

EXTERIOR WALL

**ISOLAMIN FLEXIBLE
WALL SYSTEM**

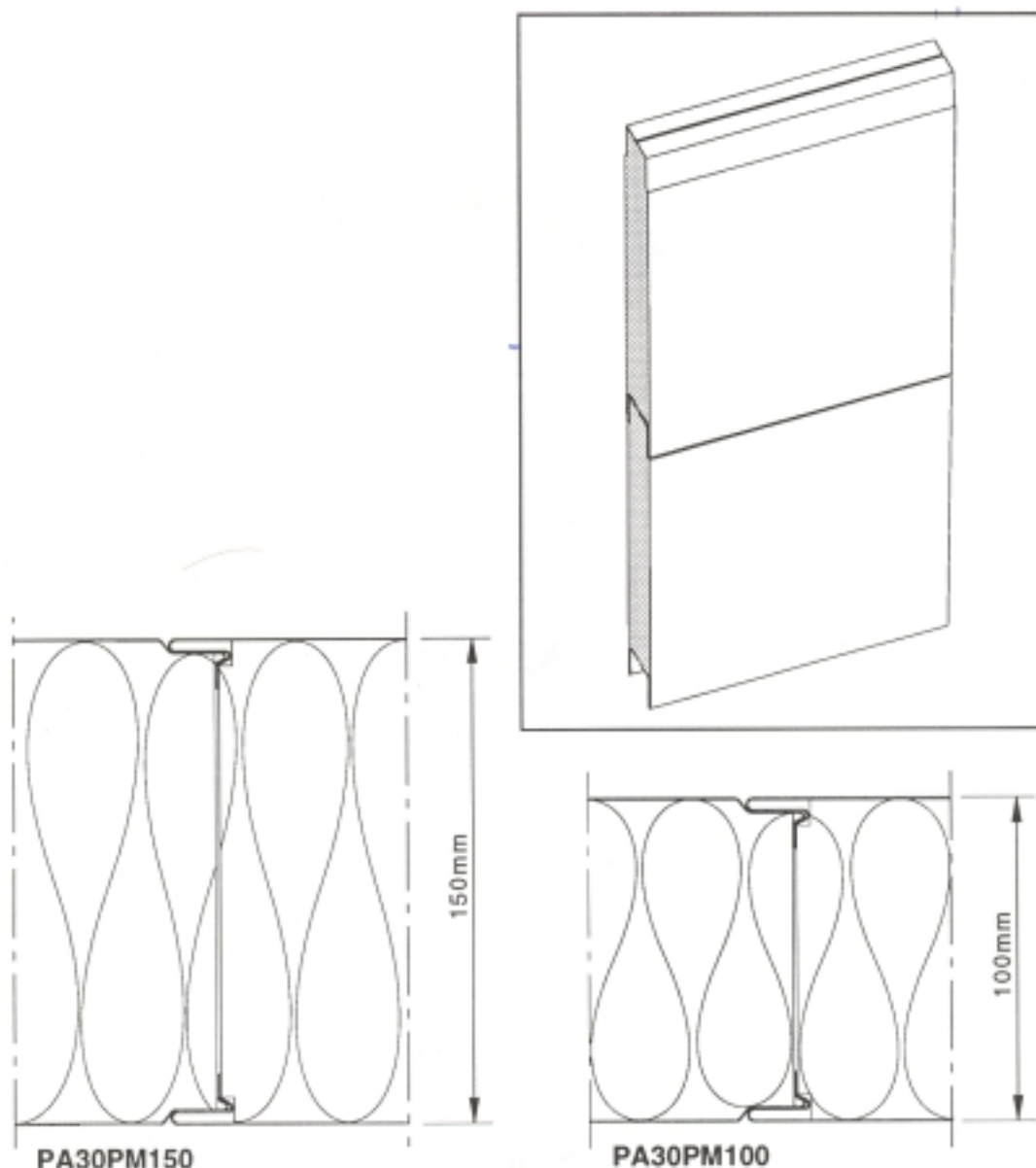


Products	1
Joint connection	2
Foundation connection	3
Corner connections	4
Roof connection	5



PANEL	PA30PU100	PA30PU150	
Thickness :	100 mm	150 mm	
Weight :	12,8 kg/sq.m	13,8 kg/sq.m	
Surface finish/			
Modular width :	Painted / 1180 mm	Painted / 1180 mm	
Coefficient of			
Thermal conductance	0,34 W/sq.m C	0,23 W/sq.m C	

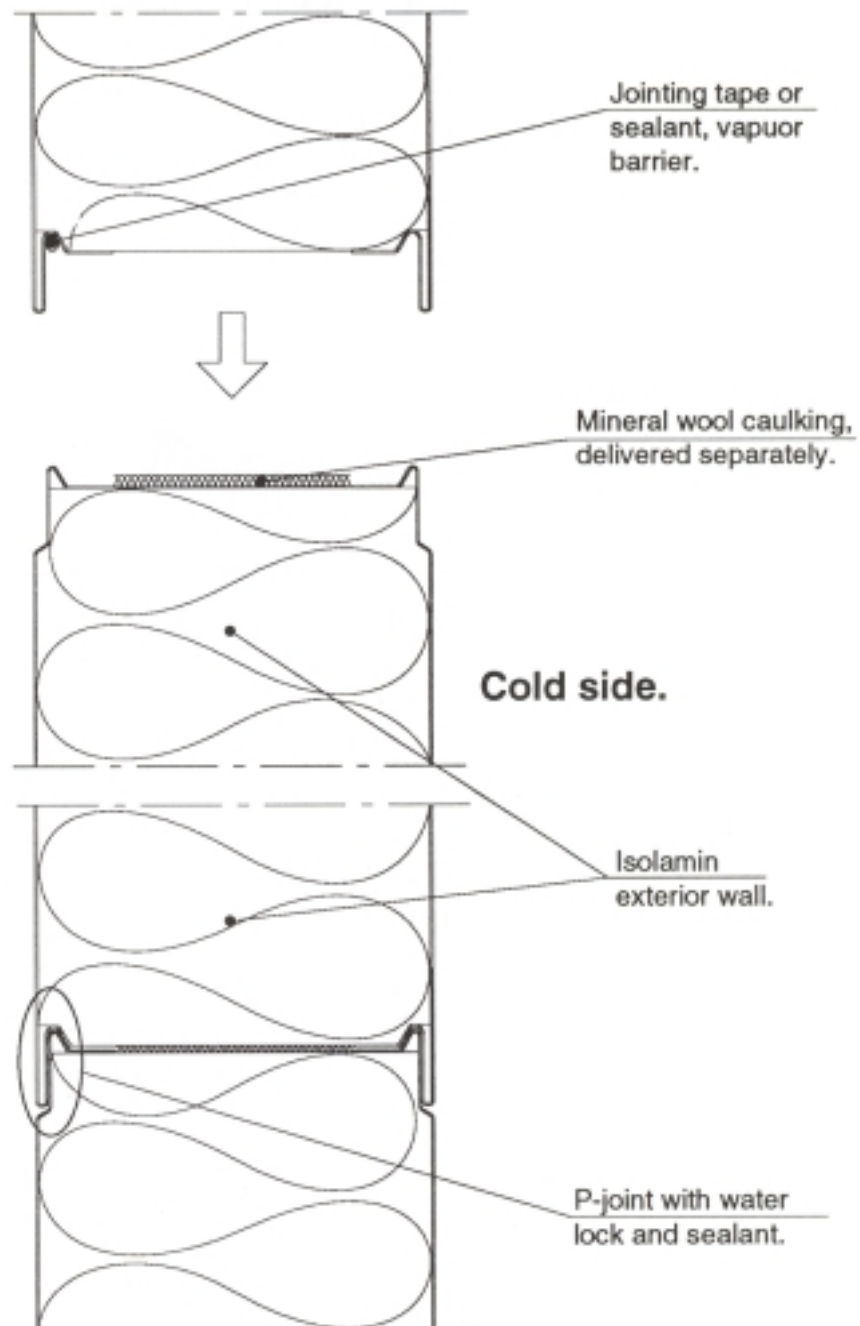
TOLERANCES	CORE MATERIAL	SURFACE MATERIAL
Length : ± 5 mm	Material : EPS	Material : Hot dipped galvanised steel sheet
Width : ± 1 mm	(Expanded polystyrene)	Surface finish/: Galv / 0,5 mm
Thickness : + 0 / - 1 mm	Density : ~20 kg/cu.m	Thickness : Painted / 0,6 mm



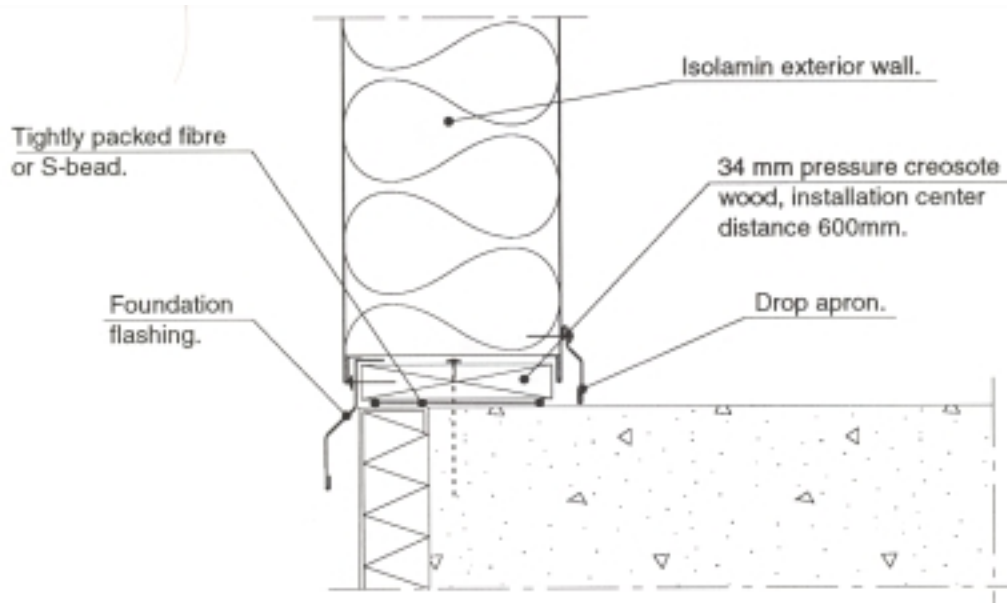
PANEL	PA30PM100	PA30PM150	
Thickness :	100 mm	150 mm	
Weight :	19,3 kg/sq.m	23,5 kg/sq.m	
Surface finish/			
Modular width :	Painted / 1180 mm	Painted / 1180 mm	
Fire class :	Incombustible	A 60 *	
Sound reduction :	28 la lab	-	
Coefficient of			
Thermal conductance	0,40 W/sq.m C	0,28 W/sq.m C	

* Typgodkännande bevis Nr: 3953/92

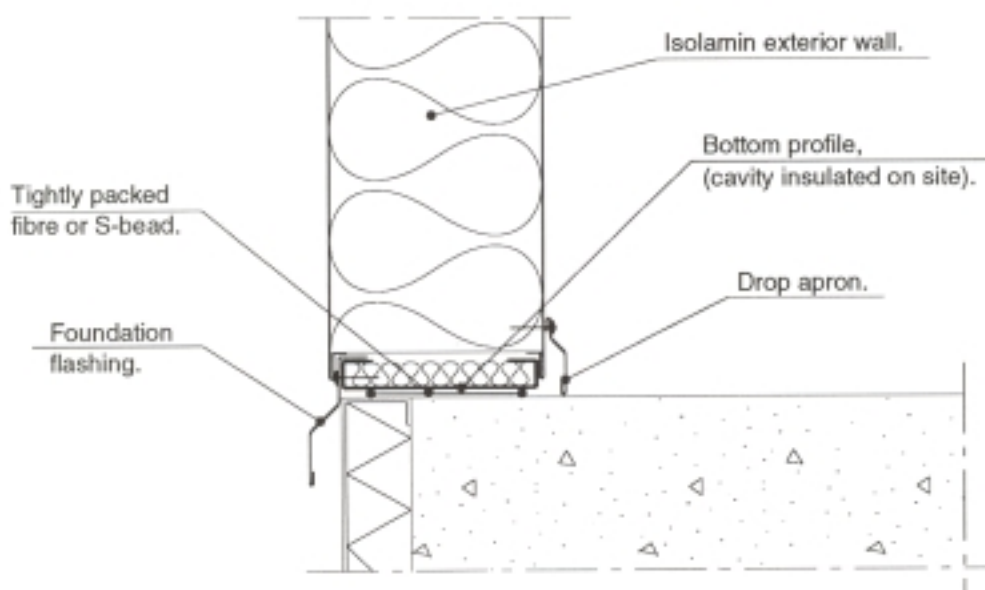
TOLERANCES	CORE MATERIAL	SURFACE MATERIAL
Length : ± 5 mm	Material : Mineral wool	Material : Hot dipped galvanised steel sheet
Width : ± 1 mm	Density : 85 kg/cu.m ± 10%	Surface finish/: Galv / 0,5 mm
Thickness : + 0 / - 1 mm		Thickness : Painted / 0,6 mm

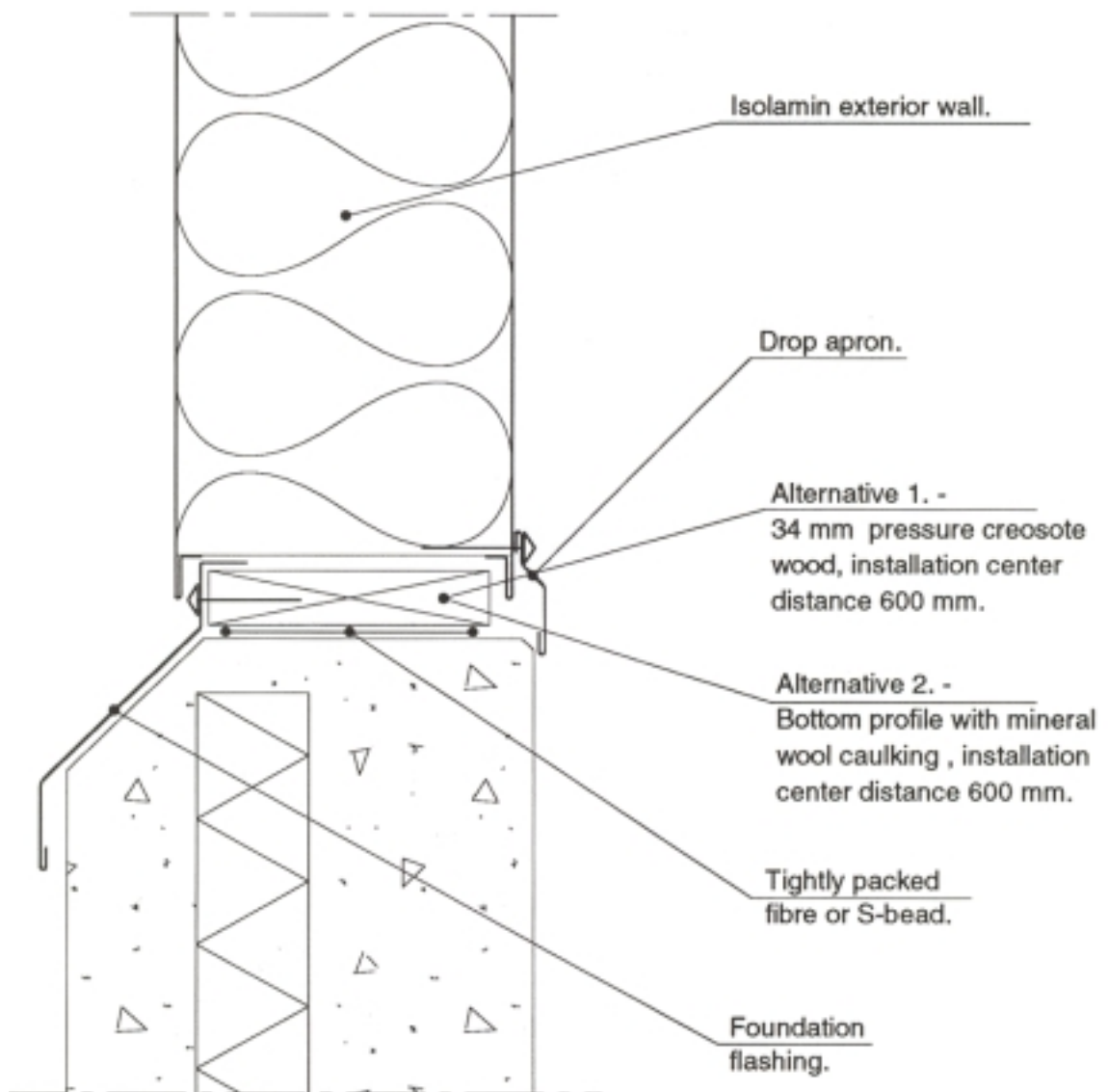
Horizontal wall joint.

Low foundation, alternative 1.

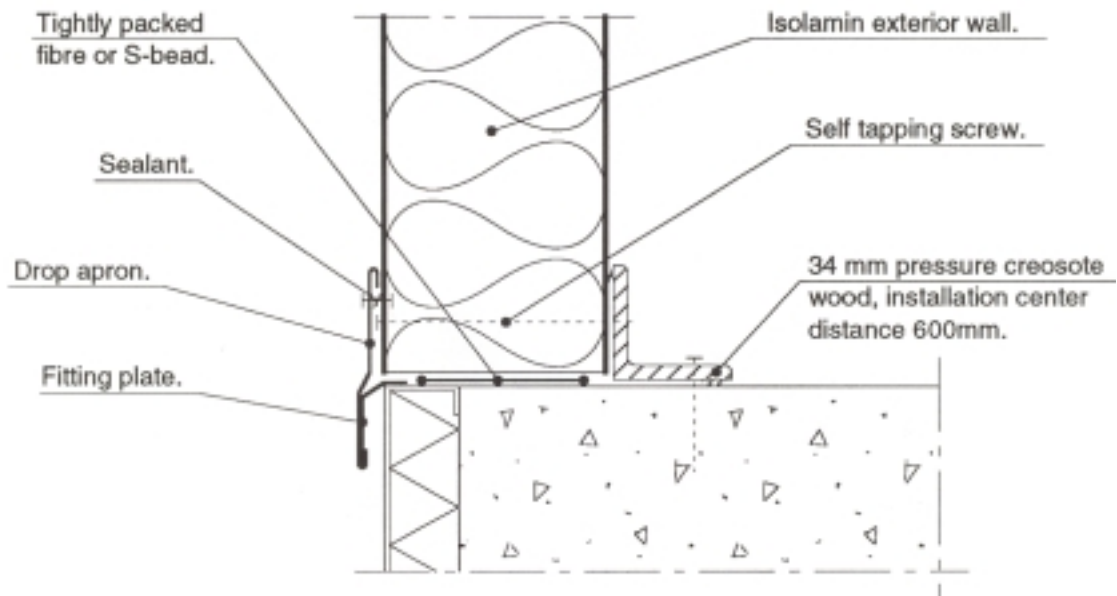


Low foundation, alternative 2.



High foundation.

Vertical installation, low foundation.



Vertical installation, high foundation.

